

**Market snapshot**



Equities - India	Close	Chg .%	CYTD.%
Sensex	82,948	-0.2	14.8
Nifty-50	25,378	-0.2	16.8
Nifty-M 100	59,753	-0.7	29.4
Equities-Global	Close	Chg .%	CYTD.%
S&P 500	5,618	-0.3	17.8
Nasdaq	17,573	-0.3	17.1
FTSE 100	8,254	-0.7	6.7
DAX	18,711	-0.1	11.7
Hang Seng	6,176	0.0	7.1
Nikkei 225	36,380	0.5	8.7
Commodities	Close	Chg .%	CYTD.%
Brent (US\$/Bbl)	75	0.0	-3.8
Gold (\$/OZ)	2,576	0.3	24.9
Cu (US\$/MT)	9,400	1.8	11.1
Almn (US\$/MT)	2,537	0.9	8.1
Currency	Close	Chg .%	CYTD.%
USD/INR	83.8	0.0	0.7
USD/EUR	1.1	0.1	0.8
USD/JPY	141.7	-0.5	0.4
YIELD (%)	Close	1MChg	CYTD chg
10 Yrs G-Sec	6.8	0.00	-0.4
10 Yrs AAA Corp	7.3	0.00	-0.4
Flows (USD b)	18-Sep	MTD	CYTD
FII	0.1	1.53	8.6
DII	0.02	5.77	38.4
Volumes (INRb)	18-Sep	MTD*	YTD*
Cash	70	1208	1295
F&O	7,10,616	4,06,097	3,80,779

Note: Flows, MTD includes provisional numbers.

\*Average



**Today's top research idea**

**AU Small Finance Bank: On a long growth runway!**

- ❖ AU Small Finance Bank (AUBANK) is well-positioned for strong growth, demonstrating a steady improvement in operating profitability as it capitalizes on the synergies resulting from the merger. A high-yielding loan book following the merger and broader product offerings, especially in the South, will facilitate profitable growth in the coming years.
- ❖ The bank's recent application for a Universal Bank license is expected to streamline regulatory requirements, improve brand positioning, and foster growth by enhancing customer acquisition and deposit productivity.
- ❖ Although NIM may contract to 5.5-5.7% due to rising costs, improvements in disbursement yields and potential rate cuts are expected to enhance margins. We estimate the operating leverage to improve gradually with a C/I projection of 62% for FY25 and further recovery to 60% by FY27.
- ❖ We estimate RoA to improve to 1.8% by FY27, aided by ~24% loan growth, resulting in a ~32% CAGR in earnings over FY25-FY27. We reiterate our BUY rating with a revised TP of INR830 (premised on 3.2x FY26E BV).



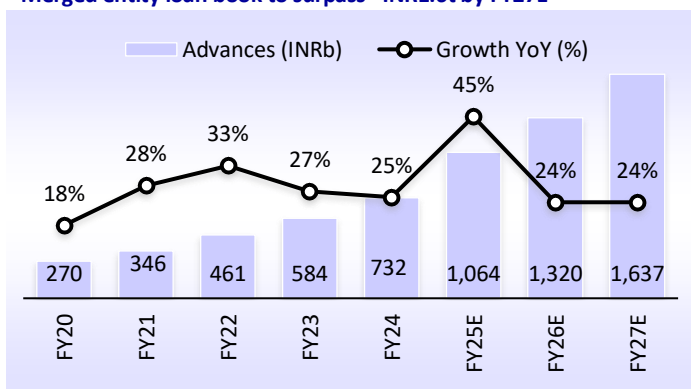
**Research covered**

Cos/Sector	Key Highlights
<b>AU Small Finance Bank</b>	<b>On a long growth runway!</b>
<b>P&amp;G Hygiene and Healthcare</b>	<b>Focusing on sustainable growth; rich valuation limits upside</b>
<b>EcoScope</b>	<b>India's Quarterly Economic Outlook – 2QFY25</b>



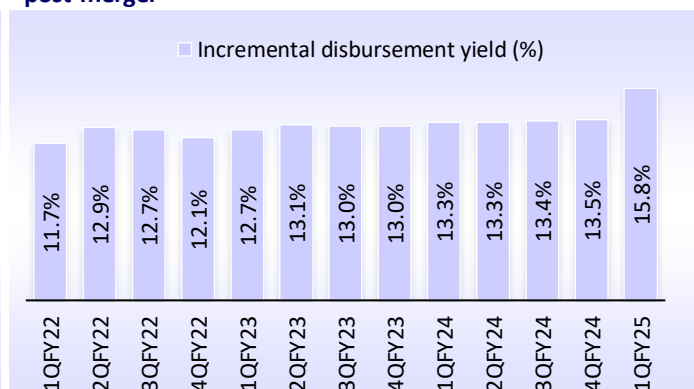
**Chart of the Day: AU Small Finance Bank (On a long growth runway!)**

Merged entity loan book to surpass ~INR1.6t by FY27E



Source: MOFSL, Company

AUBANK's disbursement yield increased sharply to 15.8% post-merger



Source: MOFSL, Company

Research Team (Gautam.Duggad@MotilalOswal.com)

Investors are advised to refer through important disclosures made at the last page of the Research Report.

Motilal Oswal research is available on [www.motilaloswal.com/Institutional-Equities](http://www.motilaloswal.com/Institutional-Equities), Bloomberg, Thomson Reuters, Factset and S&P Capital.



Kindly click on textbox for the detailed news link

1

### **NTPC Green Energy files draft papers for \$1.2 billion IPO**

The company, a unit of state-owned power producer NTPC, will only issue new shares, and existing shareholders will not sell any stake. It will use the proceeds from the fresh issue to repay loans worth 75 billion rupees taken by its unit NTPC Renewable Energy.

2

### **Aditya Birla Capital's plan to merge Aditya Birla Finance with itself gets 'no objection' from RBI**

The Scheme remains subject to various statutory and regulatory approvals, including approvals from the National Company Law Tribunal, other applicable authorities and the respective shareholders and creditors of the companies involved in the...

3

### **Garden Reach Shipbuilders bags \$54-million German order for four more cargo vessels**

The vessels will be designed, built, and delivered over a period of 33 months from the original contract signing date. The deal does not involve any related party transactions.

4

### **Ion Exchange wins ₹161-crore contract from Adani Power for water and environment solutions**

The contracts involve providing comprehensive water and environment management solutions for two 800 MW units at Adani's Raipur and Raigarh ultra-superpower projects.

5

### **GE T&D India promoters to sell 11.7% stake via OFS at ₹1,400 per share**

The promoters have also included an oversubscription option to sell an additional 3.9% of equity, representing 10 million shares, which could increase the total sale to 15.6% of the company's paid-up equity share capital, if fully exercised. This means the total potential offer size could reach 40 million shares.

6

### **Aurobindo to acquire remaining 49% stake in GLS Pharma for Rs 22.5 crore**

This acquisition is undertaken to hold the entire ownership of GLS by the company," it said, adding that the transaction is estimated to be completed before December 31, 2024

7

### **Tata Power Renewable Energy bags 400 MW wind-solar project from MSEDCL**

The company said that the LoA includes an original contracted capacity of 200 MW, along with a greenshoe option for an additional contracted capacity of 200 MW. This would be the largest renewable energy project in Maharashtra till date for TPREL.



# AU Small Finance Bank

BSE SENSEX 82,948 S&P CNX 25,378

**CMP: INR724 TP: INR830 (+15%) Buy**



### Stock Info

Bloomberg	AUBANK IN
Equity Shares (m)	743
M.Cap.(INRb)/(USDb)	538.4 / 6.4
52-Week Range (INR)	813 / 554
1, 6, 12 Rel. Per (%)	15/12/-27
12M Avg Val (INR M)	2167
Free float (%)	77.1

### Financials & Valuations (INR b)

Y/E March	FY24	FY25E	FY26E
NII	51.6	80.5	101.2
PPoP	24.4	40.2	51.3
PAT	15.3	21.4	28.1
NIM (%)	5.2	6.2	6.0
EPS (INR)	23.0	30.3	37.7
EPS Gr. (%)	4.3	31.8	24.6
BV/Sh. (INR)	187	223	260
ABV/Sh. (INR)	183	217	253

### Ratios

RoE (%)	13.1	14.7	15.6
RoA (%)	1.5	1.6	1.7

### Valuations

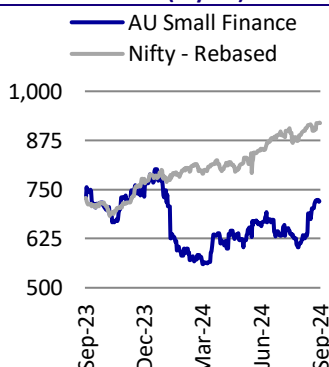
P/E (X)	31.2	23.7	19.0
P/BV (X)	3.8	3.2	2.8
P/ABV (X)	3.9	3.3	2.8

### Shareholding Pattern (%)

As On	Jun-24	Mar-24	Jun-23
Promoter	22.9	25.5	25.5
DII	18.4	22.8	19.3
FII	39.6	39.4	41.6
Others	19.1	12.4	13.6

FII includes depository receipts

### Stock Performance (1-year)



## On a long growth runway!

### Earnings to clock ~32% CAGR over FY25-FY27

- AU Small Finance Bank (AUBANK) is well-positioned for strong growth, demonstrating a steady improvement in operating profitability as it capitalizes on the synergies resulting from the merger. A high-yielding loan book following the merger and broader product offerings, especially in the South, will facilitate profitable growth in the coming years.
- The bank's recent application for a Universal Bank license is expected to streamline regulatory requirements, improve brand positioning, and foster growth by enhancing customer acquisition and deposit productivity.
- Although NIM may contract to 5.5-5.7% due to rising costs, improvements in disbursement yields and potential rate cuts are expected to enhance margins. We estimate the operating leverage to improve gradually with a C/I projection of 62% for FY25 and further recovery to 60% by FY27.
- The bank maintains robust asset quality with stable credit costs. It expects GNPA/NNPA ratios to remain around 1.9%/0.6% by FY27 and PCR to improve to 70%.
- We estimate RoA to improve to 1.8% by FY27, aided by ~24% loan growth, resulting in a ~32% CAGR in earnings over FY25-FY27. We reiterate our BUY rating with a revised TP of INR830 (premised on 3.2x FY26E BV).

### Estimate loan CAGR of ~24%; business mix to diversify further

AUBANK posted a robust CAGR of ~25% in its standalone advances over FY22-FY24, with a 3.4% QoQ growth in the loan portfolio during 1QFY25, adjusted for its merger with Fincare SFB. The merger will accelerate the company's growth, enabling it to expand its geographic reach and meet the Priority Sector Lending (PSL) requirements through its stronger presence in high-yield segments such as MFI, while also strengthening its Small Business Loans (SBL) and gold loan portfolios. The complementary asset compositions of AUBANK's and Fincare SFB's portfolios bridge the gap in product offerings, creating a diversified suite that supports growth and solidifies the merged entity's leadership in the SFB sector.

### Focus on deposit mobilization and strategic CD ratio management

AUBANK is strategically focusing on deposit mobilization while managing its cost of funds, having retired INR10b in high-cost bulk deposits during 1QFY25. AUBANK's CD ratio was 92%, but when adjusted for refinance-backed loans, it stood at 84%. We estimate deposit mobilization to gain traction, enabling a moderation in the CD ratio to ~90% by FY25E (in line with the bank guidance). The bank targets 25% deposit growth in FY25, emphasizing granular retail deposits while it aims to maintain a CD ratio of ~90% (85% ex refinance). With a stable funding mix of 70% CASA and Retail TDs and 15% non-callable bulk TDs, we clock ~24% CAGR in AUBANK's loan book, reaching INR1.64t by FY27E, and a similar growth rate for deposits at INR1.84t.

**Funding cost pressures to keep near-term margin under check**

AUBANK's NIM increased ~90bp QoQ to around 6.0% in 1QFY25, primarily due to a 120 bp rise in loan yields from its merger with Fincare SFB. Despite a 7 bp QoQ reduction in funding costs to 7.03%, aided by the retirement of high-cost bulk deposits, the elevated deposit rates and competition are expected to maintain high funding costs in the near term. The bank anticipates NIM to remain ~5.5-5.7% over FY25 as deposit mobilization accelerates. However, a potential turn in the repo rate cycle, with 62% of the loan book being fixed in nature, will support margins. We estimate NIM to gradually improve over FY25-FY27, aided by improved operating leverage and a possible capital raise in FY26 to support loan growth.

**Near-term C/I ratio sticky; operating leverage to improve gradually**

AUBANK is investing in sustainable growth through technology, streamlined processes, and geographic expansion with cost ratios projected to stay high at 62% in FY25 (slightly better than the management's conservative estimate of ~63% for FY25; 60% cost-income ratio in 1QFY25). The bank's merger with Fincare SFB is expected to drive revenue growth through cross-selling, enhanced distribution income, and benefits from the AD-1 license, with cost ratios expected to improve from FY26 as the merger synergies are realized. Additionally, AUBANK's recent application for a Universal Bank license is set to ease regulatory requirements and enhance brand positioning, supporting growth through increased customer acquisition and improved deposit productivity from the expanded branch network.

**Estimate GNPA/NNPA ratio at ~1.9%/0.6% by FY27**

AUBANK has maintained robust underwriting, characterized by in-house origination, strong asset monitoring, and efficient collections. The bank expects credit cost of 6.5-7.0% for its credit card business and around 3% for microfinance over the long term, having set aside an additional INR170m for the MFI segment in 1QFY25. During 1QFY25 the bank reported a credit cost of 33 bp (29 bp adjusting for recoveries), despite deteriorations in the retail unsecured segment. Although the MFI segment continues to report stress, AUBANK expects the credit cost to remain stable at ~1.2% for FY25. Asset quality ratios are, thus, expected to remain in control with GNPA/NNPA ratios at ~1.9%/0.6% by FY27E, while PCR improves to 70% from ~65% currently.

**Valuation and view: Reiterate BUY with a revised TP of INR830**

- AUBANK is well-positioned to deliver superior growth with a steady improvement in operating profitability as it benefits from the synergies following its merger with Fincare SFB. This merger enables the bank to benefit from a higher-yielding loan book and a broader product suite, thereby driving growth, particularly in the South.
- The bank's recent application for a Universal Bank license is expected to ease regulatory requirements and enhance brand positioning, thus supporting growth while improving deposit productivity. While NIM may moderate slightly due to the rising cost of funds, improved disbursement yields and potential rate cuts are likely to improve margins over FY26E.
- AUBANK aims for a 1.6% RoA in FY25 with a potential for 1.8% by FY27E. We estimate AUBANK to deliver ~24% loan growth CAGR and ~32% PAT CAGR over FY25-FY27. With strong execution capabilities and a proven management track record, we remain optimistic about AUBANK's growth and reiterate a BUY rating with a revised TP of INR830 (premised on 3.2x FY26E BV).



# P&G Hygiene and Healthcare

BSE SENSEX 82,948 S&P CNX 25,378

**CMP: INR16,540 TP: INR17,000 (+3%) Neutral**



**Stock Info**

Bloomberg	PG IN
Equity Shares (m)	32
M.Cap.(INRb)/(USDb)	536.9 / 6.4
52-Week Range (INR)	19180 / 15306
1, 6, 12 Rel. Per (%)	-6/-14/-31
12M Avg Val (INR M)	142
Free float (%)	29.4

**Financials Snapshot (INR b)**

Y/E June	FY24	FY25E	FY26E
Sales	42.1	46.8	51.6
Sales Gr. (%)	7.5	11.3	10.3
EBITDA	9.8	11.5	12.9
Margin (%)	23.4	24.5	25.0
Adj. PAT	7.2	8.5	9.6
Adj. EPS (INR)	220.3	260.2	296.4
EPS Gr. (%)	15.1	18.2	13.9
BV/Sh.(INR)	238.7	290.8	350.2

**Ratios**

RoE (%)	83.2	98.4	92.6
RoCE (%)	87.4	109.4	101.9

**Valuations**

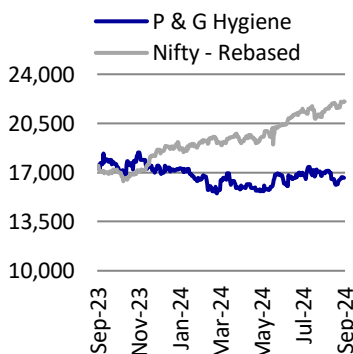
P/E (x)	72.9	61.7	54.2
P/BV (x)	67.3	55.2	45.9
EV/EBITDA (x)	52.4	44.8	39.6
Div. Yield (%)	1.6	1.3	1.5

**Shareholding pattern (%)**

As On	Jun-24	Mar-24	Jun-23
Promoter	70.6	70.6	70.6
DII	15.2	15.1	15.5
FII	1.6	1.6	1.1
Others	12.7	12.7	12.7

FII Includes depository receipts

**Stock Performance (1-year)**



**Focusing on sustainable growth; rich valuation limits upside**

**We attended the analyst meet of PG and following are the key takeaways.**

- During the analyst meet, the management highlighted: (a) potential for double-digit sales growth, particularly in the feminine hygiene segment, in which per-capita spending is currently only one-sixth of that in China; (b) the possibility of accelerating revenue growth following a 1.5x increase in distribution reach compared to three years ago; (c) growing momentum in new portfolio innovations such as Whisper Ultra hygiene products and Vicks Roll-On for headaches; and (d) cost savings to continue (savings of INR1.13b in FY24, ~3% of sales).
- PG has delivered sales/EBITDA/APAT growth of 8%/13%/15% in FY24. Gross margin expanded by 400bp YoY to 61.6% during the year, out of which 260bp was reinvested in A&P (up 33 % YoY in FY24). EBITDA margin moderated by 120bp YoY to 23.4%.
- The company has delivered growth over the years through a strong portfolio of products, superior packaging, brand communication, and retail execution. It has delivered a CAGR of 7%/10%/11% in sales/EBITDA/ APAT over FY19-24. EBITDA margin has improved by ~270bp over the same period.
- **The stock trades at an expensive valuation of 62x/54x FY25E/FY26E EPS. We reiterate Neutral rating on the stock.**

**Valuation and view**

- There is no change in our estimates after the analyst meet.
- Two factors make PG an attractive long-term core holding: 1) robust growth potential in the feminine hygiene segment (65-68% mix of FY24 sales) and the potential for market share gains, aided by strategic initiatives, including the fortification of significant market advantages, and 2) potential for higher margin gains from the long-term trend of premiumization in the feminine hygiene segment.
- With a portfolio of essentials and healthcare, PGHH focuses on product innovation-led customer acquisition. Penetration play would continue, but at a stable pace, despite the high scope of user additions. The stock trades at expensive valuations of 62x/54x FY25E/FY26E P/E. We do not see any medium-term trigger. Reiterate Neutral with a TP of INR17,000 (55x Jun'26E EPS).

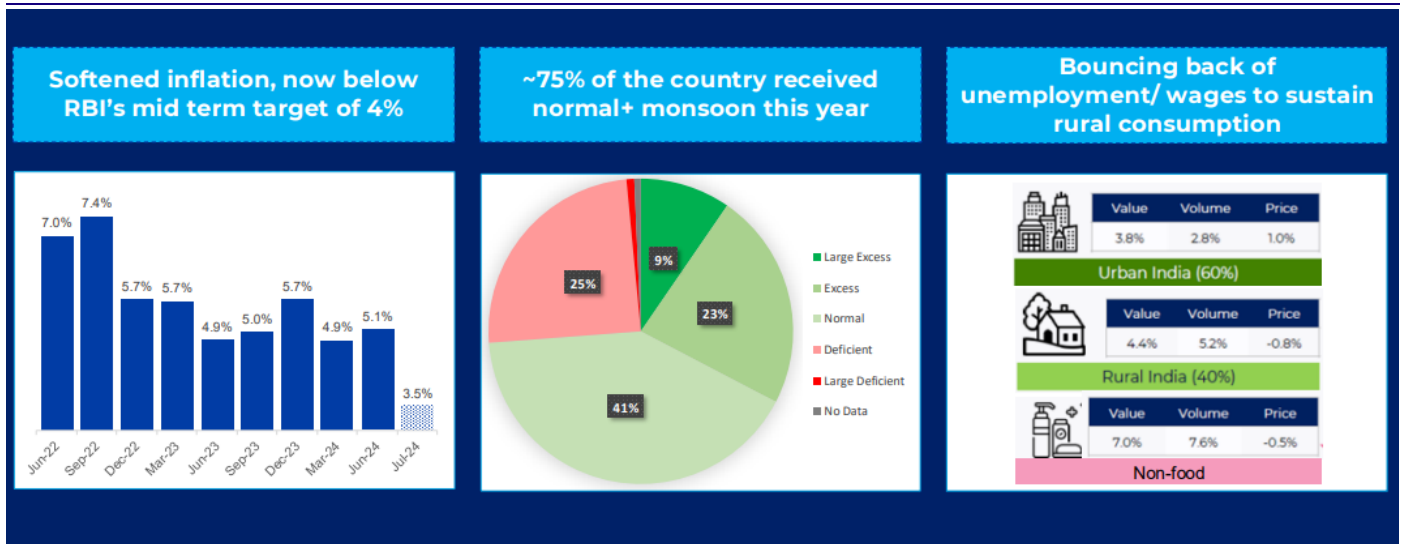


## Key points from analyst meet

### Business environment

- The FMCG sector has witnessed a favorable recovery in volume growth. In FY24, the industry posted a ~4% increase in volume, and it is anticipated to deliver mid-single-digit growth in FY25.
- Improving consumption trends are emerging, driven by easing inflation and favorable monsoon patterns, which are expected to boost rural demand.
- Inflation has moderated, dropping to below 4% in Jul'24. Additionally, 75% of the country has experienced normal monsoon this year, further supporting agricultural output and rural spending.
- The rebound in employment is playing a crucial role in sustaining rural consumption, as improved income stability in rural areas stimulates purchasing power and demand for everyday goods.

### Positive consumption trends



Source: Company, MOFSL

## India's Quarterly Economic Outlook – 2QFY25

### Real GDP growth could slow toward 6%

- For the first time in five quarters, India's real GDP posted slower-than-expected growth of 6.7% YoY in 1QFY25 vs. the RBI's projection of 7.1%. We believe that real GDP growth could stay in the range of 5.7-6.2% in the remaining three quarters of FY25 (with 6.0-6.3% real GVA growth), implying full-year real GDP growth of 6.1% in FY25 (revised down from 6.5% earlier) vs. 8.2% in FY24. This would be much slower than the RBI's projection of 7.2% and the Bloomberg consensus of 6.8%. We expect real GDP growth to improve slightly to 6.3% in FY26 (vs. 6.4% forecasted in Jun'24).
- While we expect GDP growth to be slower, headline retail inflation is likely to average ~4.5% YoY in FY25, in line with the RBI's projections and market consensus. With inflation projected at 4.7% in 2HFY25 and real GDP growth at sub-6%, the noise for rate cuts will grow, especially after the US Federal Reserve cuts rates this week. Rate cuts in India, however, could materialize only in Feb'25, considering the concerns over weak deposit growth and the fact that 2QFY25 GDP growth would be published at end-Nov'24, very close to early-Dec'24 monetary policy. We expect inflation to rise toward 5.0% in FY26, since we believe that core inflation has bottomed out and will start rising from 2HFY25.
- Lastly, we have lowered our current account deficit (CAD) forecasts to 0.8%/0.6% of GDP (USD32.4b/USD26.0b) in FY25/FY26, compared to 1.2%/1.3% estimated earlier. This is because of a downgrade in GDP growth, an expected moderation in gold imports and continued strength in services in FY25/FY26. In the absence of any global shock, India's foreign exchange reserves will likely continue to rise to mitigate the appreciation bias in Indian Rupee (INR).

### Changes to our economic forecasts since Jun'24

**Real growth:** We downgrade our real GDP growth forecasts to 6.2%/5.7%/5.7% in 2Q/3Q/4QFY25, implying 6.1% growth in FY25 (cut from 6.5%) vs. 8.2% in FY24. We revise it only marginally to 6.3% (from 6.4% earlier) for FY26.

An expected real GDP growth of sub-6% with average inflation of 4.7% in 2HFY25 does not inspire confidence for a rate cut in Dec'24.

**CPI inflation and interest rates:** We keep our headline CPI-inflation forecast unchanged at 4.5% in FY25, but upgrade it to 5% in FY26. An expected real GDP growth of sub-6% with average inflation of 4.7% in 2HFY25 does not inspire confidence for a rate cut in Dec'24, and thus, more likely to materialize in Feb'25.

**External sector and INR:** With crude oil prices expected to remain ~USD75/barrel over the next 18 months, lower gold imports and continued strength in services trade, India's CAD could narrow to 0.8%/0.6% of GDP in FY25/FY26, lower than our earlier forecasts and similar to that in FY24. In the absence of any global shock, it implies an accretion of USD50b in foreign exchange reserves this year, with INR remaining stable at ~84/USD.

### Forecasts of key macroeconomic variables for the Indian economy

Macro indicators	Unit	FY22	FY23	FY24	FY25 Forecasts		FY26 Forecasts	
					MOFSL Jun'24	MOFSL Sep'24	MOFSL Jun'24	MOFSL Sep'24
Nominal GDP <sub>MP</sub>	YoY (%)	18.9	14.2	9.6	10.8	10.0	10.1	10.6
Real GDP <sub>MP</sub>	YoY (%)	9.7	7.0	8.2	6.5	6.1	6.4	6.3
Real GVA <sub>FC</sub>	YoY (%)	9.4	6.7	7.2	6.0	6.3	6.1	6.1
Consumer price index	YoY (%)	5.5	6.6	5.4	4.5	4.5	4.7	5.0
Repo rate (year-end)	p.a. (%)	4.00	6.50	6.50	6.25	6.25	5.75	5.50
USD:INR (average)	unit	74.5	80.4	82.8	84.0	84.0	85.0	84.9
Current a/c balance	% of GDP	(1.2)	(2.0)	(0.7)	(1.2)	(0.8)	(1.3)	(0.6)
Gol's fiscal deficit	% of GDP	6.7	6.4	5.6	5.0	4.9	4.5	4.5

Source: Central Statistics Office (CSO), Reserve Bank of India (RBI), MOFSL



### Easy Trip Planners: YoloBus will scale to 2,000 EV buses in the next 4 years; Prashant Pitti, Co-Founder

- Management looking at diversifying business model by taking minority stake in select companies
- Looking at investing in companies and gradually listing them
- With YoloBus, we are doing well with 80 buses currently
- Rollins international revenue at Rs. 250 Crore with pat at Rs. 2 Crore
- YoloBus will scale to 2000 buses on EV side in next 4 years

[➔ Read More](#)

### Happiest Minds: FY25 margin guidance of 20-22% factors in wage hikes & lower working days in Q2; Joseph Ananthraju, MD & CFO

- Comfortable with FY25 revenue guidance shared earlier
- Q2FY25 will see drop in margin due to wage hikes
- FY25 margin guidance of 20-22% factors in wage hikes & lower number of working days in Q2
- Should see improvement in customer outlook with interest rate cuts
- Added 10 more discussions on Gen AI the last 1.5 months

[➔ Read More](#)

### Cholamandalam: Expect cost of funds to drop by 50% of quantum of rate cut; Arul Selvan, President & CFO

- Need to address overhang of inflation, better if RBI cuts rate a little later
- 50% of company's borrowings are from banks
- 58% of the books is fixed, won't have to pass on rate cuts
- Expect cost of funds to drop by 50% of quantum of rate cut (10-12 bps on a 25bps Cut)
- Seeing 10-15% growth in vehicle finance book

[➔ Read More](#)

### MAS Financial: FY25 business outlook | AUM growth trend to sustain?; Kamlesh Gandhi, CMD

- Eyeing Rs. 20000 Crore AUM in next three to four years
- Company is concentrating on diversifying its portfolio on asset side
- Out of the total Rs. 20000 Crore AUM around 50% will be from MSME
- In next two to three months expect growth in CV and two wheeler loans
- Going ahead personal loan will not be more than 10% of AUM
- Are cautious on personal loans

[➔ Read More](#)

Investment in securities market are subject to market risks. Read all the related documents carefully before investing



Explanation of Investment Rating	
Investment Rating	Expected return (over 12-month)
BUY	>=15%
SELL	< - 10%
NEUTRAL	> - 10 % to 15%
UNDER REVIEW	Rating may undergo a change
NOT RATED	We have forward looking estimates for the stock but we refrain from assigning recommendation

\*In case the recommendation given by the Research Analyst is inconsistent with the investment rating legend for a continuous period of 30 days, the Research Analyst shall within following 30 days take appropriate measures to make the recommendation consistent with the investment rating legend.

**Disclosures:**

The following Disclosures are being made in compliance with the SEBI Research Analyst Regulations 2014 (herein after referred to as the Regulations).

Motilal Oswal Financial Services Ltd. (MOFSL) is a SEBI Registered Research Analyst having registration no. INH000000412. MOFSL, the Research Entity (RE) as defined in the Regulations, is engaged in the business of providing Stock broking services, Depository participant services & distribution of various financial products. MOFSL is a listed public company, the details in respect of which are available on [www.motilaloswal.com](http://www.motilaloswal.com). MOFSL (erstwhile Motilal Oswal Securities Limited - MOSL) is registered with the Securities & Exchange Board of India (SEBI) and is a registered Trading Member with National Stock Exchange of India Ltd. (NSE) and Bombay Stock Exchange Limited (BSE), Multi Commodity Exchange of India Limited (MCX) and National Commodity & Derivatives Exchange Limited (NCDEX) for its stock broking activities & is Depository participant with Central Depository Services Limited (CDSL) National Securities Depository Limited (NSDL), NERL, COMRIS and CCRL and is member of Association of Mutual Funds of India (AMFI) for distribution of financial products and Insurance Regulatory & Development Authority of India (IRDA) as Corporate Agent for insurance products. Details of associate entities of Motilal Oswal Financial Services Ltd. are available on the website at <http://onlinereports.motilaloswal.com/Dormant/documents/Associate%20Details.pdf>

Details of pending Enquiry Proceedings of Motilal Oswal Financial Services Limited are available on the website at <https://galaxy.motilaloswal.com/ResearchAnalyst/PublishViewLitigation.aspx>

MOFSL, its associates, Research Analyst or their relatives may have any financial interest in the subject company. MOFSL and/or its associates and/or Research Analyst or their relatives may have actual beneficial ownership of 1% or more securities in the subject company at the end of the month immediately preceding the date of publication of the Research Report or date of the public appearance. MOFSL and its associate company(ies), their directors and Research Analyst and their relatives may have any other potential conflict of interests at the time of publication of the research report or at the time of public appearance, however the same shall have no bearing whatsoever on the specific recommendations made by the analyst(s), as the recommendations made by the analyst(s) are completely independent of the views of the associates of MOFSL even though there might exist an inherent conflict of interest in some of the stocks mentioned in the research report.

In the past 12 months, MOFSL or any of its associates may have:

- a) received any compensation/other benefits from the subject company of this report
- b) managed or co-managed public offering of securities from subject company of this research report,
- c) received compensation for investment banking or merchant banking or brokerage services from subject company of this research report,
- d) received compensation for products or services other than investment banking or merchant banking or brokerage services from the subject company of this research report.

- MOFSL and its associates have not received any compensation or other benefits from the subject company or third party in connection with the research report.
- Subject Company may have been a client of MOFSL or its associates during twelve months preceding the date of distribution of the research report.
- Research Analyst may have served as director/officer/employee in the subject company.
- MOFSL and research analyst may engage in market making activity for the subject company.

MOFSL and its associate company(ies), and Research Analyst and their relatives from time to time may have:

- a) a long or short position in, act as principal in, and buy or sell the securities or derivatives thereof of companies mentioned herein.
- (b) be engaged in any other transaction involving such securities and earn brokerage or other compensation or act as a market maker in the financial instruments of the company(ies) discussed herein or act as an advisor or lender/borrower to such company(ies) or may have any other potential conflict of interests with respect to any recommendation and other related information and opinions.; however the same shall have no bearing whatsoever on the specific recommendations made by the analyst(s), as the recommendations made by the analyst(s) are completely independent of the views of the associates of MOFSL even though there might exist an inherent conflict of interest in some of the stocks mentioned in the research report.

Above disclosures include beneficial holdings lying in demat account of MOFSL which are opened for proprietary investments only. While calculating beneficial holdings, It does not consider demat accounts which are opened in name of MOFSL for other purposes (i.e holding client securities, collaterals, error trades etc.). MOFSL also earns DP income from clients which are not considered in above disclosures. To enhance transparency, MOFSL has incorporated a Disclosure of Interest Statement in this document. This should, however, not be treated as endorsement of the views expressed in the report. MOFSL and / or its affiliates do and seek to do business including investment banking with companies covered in its research reports. As a result, the recipients of this report should be aware that MOFSL may have a potential conflict of interest that may affect the objectivity of this report.

**Terms & Conditions:**

This report has been prepared by MOFSL and is meant for sole use by the recipient and not for circulation. The report and information contained herein is strictly confidential and may not be altered in any way, transmitted to, copied or distributed, in part or in whole, to any other person or to the media or reproduced in any form, without prior written consent of MOFSL. The report is based on the facts, figures and information that are considered true, correct, reliable and accurate. The intent of this report is not recommendatory in nature. The information is obtained from publicly available media or other sources believed to be reliable. Such information has not been independently verified and no guaranty, representation of warranty, express or implied, is made as to its accuracy, completeness or correctness. All such information and opinions are subject to change without notice. The report is prepared solely for informational purpose and does not constitute an offer document or solicitation of offer to buy or sell or subscribe for securities or other financial instruments for the clients. Though disseminated to all the customers simultaneously, not all customers may receive this report at the same time. MOFSL will not treat recipients as customers by virtue of their receiving this report.

**Analyst Certification**

The views expressed in this research report accurately reflect the personal views of the analyst(s) about the subject securities or issues, and no part of the compensation of the research analyst(s) was, is, or will be directly or indirectly related to the specific recommendations and views expressed by research analyst(s) in this report.

Disclosure of Interest Statement	Companies where there is interest
Analyst ownership of the stock	No

A graph of daily closing prices of securities is available at [www.nseindia.com](http://www.nseindia.com), [www.bseindia.com](http://www.bseindia.com). Research Analyst views on Subject Company may vary based on Fundamental research and Technical Research. Proprietary trading desk of MOFSL or its associates maintains arm's length distance with Research Team as all the activities are segregated from MOFSL research activity and therefore it can have an independent view with regards to subject company for which Research Team have expressed their views.

**Regional Disclosures (outside India)**

This report is not directed or intended for distribution to or use by any person or entity resident in a state, country or any jurisdiction, where such distribution, publication, availability or use would be contrary to law, regulation or which would subject MOFSL & its group companies to registration or licensing requirements within such jurisdictions.

**For Hong Kong:**

This report is distributed in Hong Kong by Motilal Oswal capital Markets (Hong Kong) Private Limited, a licensed corporation (CE AYY-301) licensed and regulated by the Hong Kong Securities and Futures Commission (SFC) pursuant to the Securities and Futures Ordinance (Chapter 571 of the Laws of Hong Kong) "SFO". As per SEBI (Research Analyst Regulations) 2014 Motilal Oswal Financial Services Limited (SEBI Reg No. INH000000412) has an agreement with Motilal Oswal capital Markets (Hong Kong) Private Limited for distribution of research report in Hong Kong. This report is intended for distribution only to "Professional Investors" as defined in Part I of Schedule 1 to SFO. Any investment or investment activity to which this document relates is only available to professional investor and will be engaged only with professional investors." Nothing here is an offer or solicitation of these securities, products and services in any jurisdiction where their offer or sale is not qualified or exempt from registration. The Indian Analyst(s) who compile this report is/are not located in Hong Kong & are not conducting Research Analysis in Hong Kong.

**For U.S.**

MOTILAL Oswal Financial Services Limited (MOFSL) is not a registered broker - dealer under the U.S. Securities Exchange Act of 1934, as amended (the "1934 act") and under applicable state laws in the United States. In addition MOFSL is not a registered investment adviser under the U.S. Investment Advisers Act of 1940, as amended (the "Advisers Act" and together with the 1934 Act, the "Acts"), and under

applicable state laws in the United States. Accordingly, in the absence of specific exemption under the Acts, any brokerage and investment services provided by MOFSL, including the products and services described herein are not available to or intended for U.S. persons. This report is intended for distribution only to "Major Institutional Investors" as defined by Rule 15a-6(b)(4) of the Exchange Act and interpretations thereof by SEC (henceforth referred to as "major institutional investors"). This document must not be acted on or relied on by persons who are not major institutional investors. Any investment or investment activity to which this document relates is only available to major institutional investors and will be engaged in only with major institutional investors. In reliance on the exemption from registration provided by Rule 15a-6 of the U.S. Securities Exchange Act of 1934, as amended (the "Exchange Act") and interpretations thereof by the U.S. Securities and Exchange Commission ("SEC") in order to conduct business with Institutional Investors based in the U.S., MOFSL has entered into a chaperoning agreement with a U.S. registered broker-dealer, Motilal Oswal Securities International Private Limited. ("MOSIPL"). Any business interaction pursuant to this report will have to be executed within the provisions of this chaperoning agreement.

The Research Analysts contributing to the report may not be registered /qualified as research analyst with FINRA. Such research analyst may not be associated persons of the U.S. registered broker-dealer, MOSIPL, and therefore, may not be subject to NASD rule 2711 and NYSE Rule 472 restrictions on communication with a subject company, public appearances and trading securities held by a research analyst account.

**For Singapore**

In Singapore, this report is being distributed by Motilal Oswal Capital Markets (Singapore) Pte. Ltd. ("MOCMSPL") (UEN 201129401Z), which is a holder of a capital markets services license and an exempt financial adviser in Singapore. This report is distributed solely to persons who (a) qualify as "institutional investors" as defined in section 4A(1)(c) of the Securities and Futures Act of Singapore ("SFA") or (b) are considered "accredited investors" as defined in section 2(1) of the Financial Advisers Regulations of Singapore read with section 4A(1)(a) of the SFA. Accordingly, if a recipient is neither an "institutional investor" nor an "accredited investor", they must immediately discontinue any use of this Report and inform MOCMSPL.

In respect of any matter arising from or in connection with the research you could contact the following representatives of MOCMSPL. In case of grievances for any of the services rendered by MOCMSPL write to [grievances@motilaloswal.com](mailto:grievances@motilaloswal.com).

Nainesh Rajani

Email: [nainesh.rajani@motilaloswal.com](mailto:nainesh.rajani@motilaloswal.com)

Contact: (+65) 8328 0276

**Disclaimer:**

The report and information contained herein is strictly confidential and meant solely for the selected recipient and may not be altered in any way, transmitted to, copied or distributed, in part or in whole, to any other person or to the media or reproduced in any form, without prior written consent. This report and information herein is solely for informational purpose and may not be used or considered as an offer document or solicitation of offer to buy or sell or subscribe for securities or other financial instruments. Nothing in this report constitutes investment, legal, accounting and tax advice or a representation that any investment or strategy is suitable or appropriate to your specific circumstances. The securities discussed and opinions expressed in this report may not be suitable for all investors, who must make their own investment decisions, based on their own investment objectives, financial positions and needs of specific recipient. This may not be taken in substitution for the exercise of independent judgment by any recipient. Each recipient of this document should make such investigations as it deems necessary to arrive at an independent evaluation of an investment in the securities of companies referred to in this document (including the merits and risks involved), and should consult its own advisors to determine the merits and risks of such an investment. The investment discussed or views expressed may not be suitable for all investors. Certain transactions -including those involving futures, options, another derivative products as well as non-investment grade securities - involve substantial risk and are not suitable for all investors. No representation or warranty, express or implied, is made as to the accuracy, completeness or fairness of the information and opinions contained in this document. The Disclosures of Interest Statement incorporated in this document is provided solely to enhance the transparency and should not be treated as endorsement of the views expressed in the report. This information is subject to change without any prior notice. The Company reserves the right to make modifications and alternations to this statement as may be required from time to time without any prior approval. MOFSL, its associates, their directors and the employees may from time to time, effect or have effected an own account transaction in, or deal as principal or agent in or for the securities mentioned in this document. They may perform or seek to perform investment banking or other services for, or solicit investment banking or other business from, any company referred to in this report. Each of these entities functions as a separate, distinct and independent of each other. The recipient should take this into account before interpreting the document. This report has been prepared on the basis of information that is already available in publicly accessible media or developed through analysis of MOFSL. The views expressed are those of the analyst, and the Company may or may not subscribe to all the views expressed therein. This document is being supplied to you solely for your information and may not be reproduced, redistributed or passed on, directly or indirectly, to any other person or published, copied, in whole or in part, for any purpose. This report is not directed or intended for distribution to, or use by, any person or entity who is a citizen or resident of or located in any locality, state, country or other jurisdiction, where such distribution, publication, availability or use would be contrary to law, regulation or which would subject MOFSL to any registration or licensing requirement within such jurisdiction. The securities described herein may or may not be eligible for sale in all jurisdictions or to certain category of investors. Persons in whose possession this document may come are required to inform themselves of and to observe such restriction. Neither the Firm, not its directors, employees, agents or representatives shall be liable for any damages whether direct or indirect, incidental, special or consequential including lost revenue or lost profits that may arise from or in connection with the use of the information. The person accessing this information specifically agrees to exempt MOFSL or any of its affiliates or employees from, any and all responsibility/liability arising from such misuse and agrees not to hold MOFSL or any of its affiliates or employees responsible for any such misuse and further agrees to hold MOFSL or any of its affiliates or employees free and harmless from all losses, costs, damages, expenses that may be suffered by the person accessing this information due to any errors and delays.

This report is meant for the clients of Motilal Oswal only.

Investment in securities market are subject to market risks. Read all the related documents carefully before investing.

Registration granted by SEBI and certification from NISM in no way guarantee performance of the intermediary or provide any assurance of returns to investors.

Registered Office Address: Motilal Oswal Tower, Rahimtullah Sayani Road, Opposite Parel ST Depot, Prabhadevi, Mumbai-400025; Tel No.: 022 - 71934200 / 71934263; [www.motilaloswal.com](http://www.motilaloswal.com).

Correspondence Address: Palm Spring Centre, 2nd Floor, Palm Court Complex, New Link Road, Malad (West), Mumbai- 400 064. Tel No: 022 71881000. Details of Compliance Officer: Neeraj Agarwal, Email Id: [na@motilaloswal.com](mailto:na@motilaloswal.com), Contact No.:022-40548085.

Grievance Redressal Cell:

Contact Person	Contact No.	Email ID
Ms. Hemangi Date	022 40548000 / 022 67490600	<a href="mailto:query@motilaloswal.com">query@motilaloswal.com</a>
Ms. Kumud Upadhyay	022 40548082	<a href="mailto:servicehead@motilaloswal.com">servicehead@motilaloswal.com</a>
Mr. Ajay Menon	022 40548083	<a href="mailto:am@motilaloswal.com">am@motilaloswal.com</a>

Registration details of group entities.: Motilal Oswal Financial Services Ltd. (MOFSL): INZ000158836 (BSE/NSE/MCX/NCDEX); CDSL and NSDL: IN-DP-16-2015; Research Analyst: INH000000412 . AMFI: ARN : 146822. IRDA Corporate Agent – CA0579. Motilal Oswal Financial Services Ltd. is a distributor of Mutual Funds, PMS, Fixed Deposit, Insurance, Bond, NCDs and IPO products.

Customer having any query/feedback/ clarification may write to [query@motilaloswal.com](mailto:query@motilaloswal.com). In case of grievances for any of the services rendered by Motilal Oswal Financial Services Limited (MOFSL) write to [grievances@motilaloswal.com](mailto:grievances@motilaloswal.com), for DP to [dpgrievances@motilaloswal.com](mailto:dpgrievances@motilaloswal.com).